

Name: _____ Period: _____ Date: _____

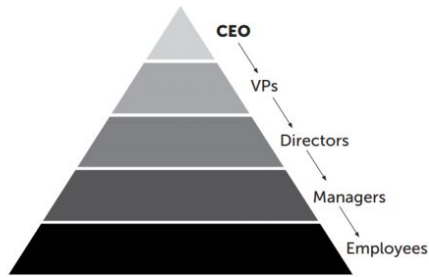
Unit 1, Lesson 1 Notes: Switching Your Thumbs

What is a paradigm? _____

For this class, a paradigm _____

Define: What is leadership to me?

THE TRADITIONAL TRIANGLE



Introduction to Servant Leadership:

This is the way that many people view leadership within _____.

A model that is _____.

Top would be CEO, then possibly a Vice President, followed by directors, managers, and eventually at the bottom it would be the employees.

This is the _____ paradigm!

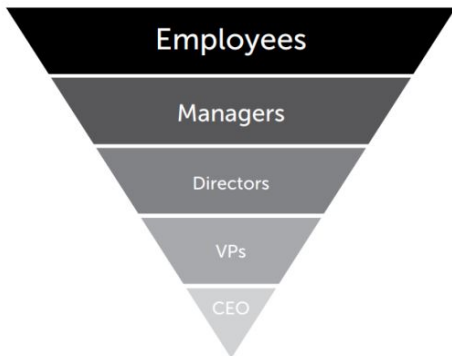
Do it, or else.

How did YOU have your thumbs? _____

Use three words to describe how it felt to switch your thumbs:

When do you think we first started doing this? _____

Then once you were born you kept doing it until it eventually became a _____.



“Switching your thumbs” over and over again would _____.

The most effective leaders _____, but don't _____.

This upside down triangle is _____!

Because the CEO is now at the bottom, does that mean that he or she is not important?

_____.

From “_____” it now changes to “_____”

Many of the successful businesses that are staying at the top of the list of Most Successful Companies are built on servant leadership, such as _____, _____ and _____.

Video: Simon Sinek -- Leaders Eat Last

List three things that stood out to you in the interview with Simon Sinek and why you think they're important.

- 1.
- 2.
- 3.

Leadership is all about: _____!

List three important relationships in your life:

- 1.
- 2.
- 3.

Video: Kid President -- How to Change the World

Listen to the video and look for connections between what Kid President says and what we've been talking about.

What I said	What my partner said