

Name: Butson Period: _____ Date: _____

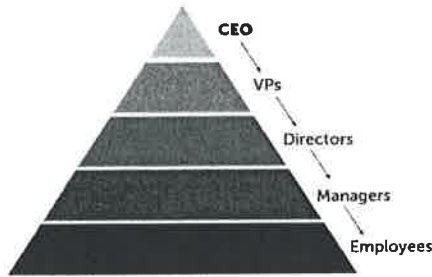
Unit 1, Lesson 1 Notes: Switching Your Thumbs

What is a paradigm? A pattern of something

For this class, a paradigm The way we view the world

Define: What is leadership to me?

THE TRADITIONAL TRIANGLE



Introduction to Servant Leadership:

This is the way that many people view leadership within business & organizations

A model that is TOP down

Top would be CEO, then possibly a Vice President, followed by directors, managers, and eventually at the bottom it would be the employees.

This is the OLD paradigm!

Do it, or else.

How did YOU have your thumbs? _____

Use three words to describe how it felt to switch your thumbs:

When do you think we first started doing this? The womb

Then once you were born you kept doing it until it eventually became a habit



"Switching your thumbs" over and over again would become normal

The most effective leaders turn triangle upside down, but don't change titles

This upside down triangle is THE NEW paradigm!

Because the CEO is now at the bottom, does that mean that he or she is not important?

NO, it just means The way The lead changes.

From "Do it or else" it now changes to "Do it and I will meet your needs"

Many of the successful businesses that are staying at the top of the list of Most Successful Companies are built on servant leadership, such as Costco Starbucks and Apple.

Video: Simon Sinek -- Leaders Eat Last

List three things that stood out to you in the interview with Simon Sinek and why you think they're important.

- 1.
- 2.
- 3.

Leadership is all about: Relationships!

List three important relationships in your life:

- 1.
- 2.
- 3.

Video: Kid President -- How to Change the World

Listen to the video and look for connections between what Kid President says and what we've been talking about.

What I said	What my partner said